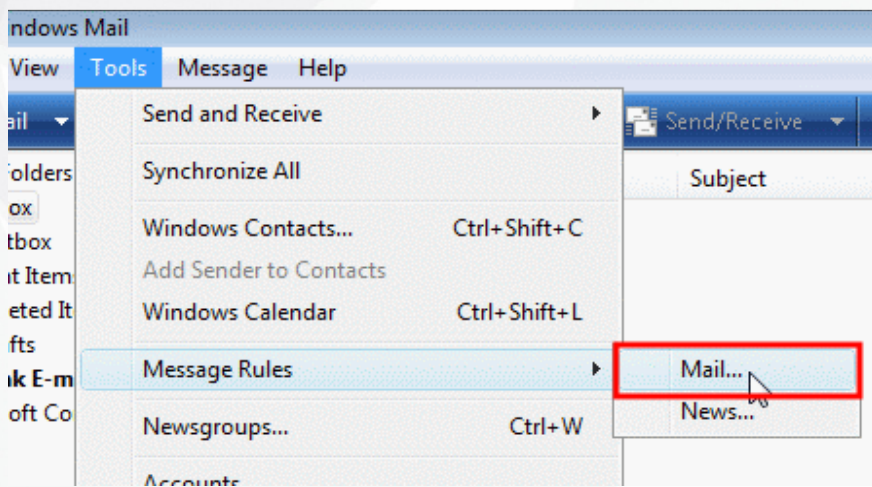
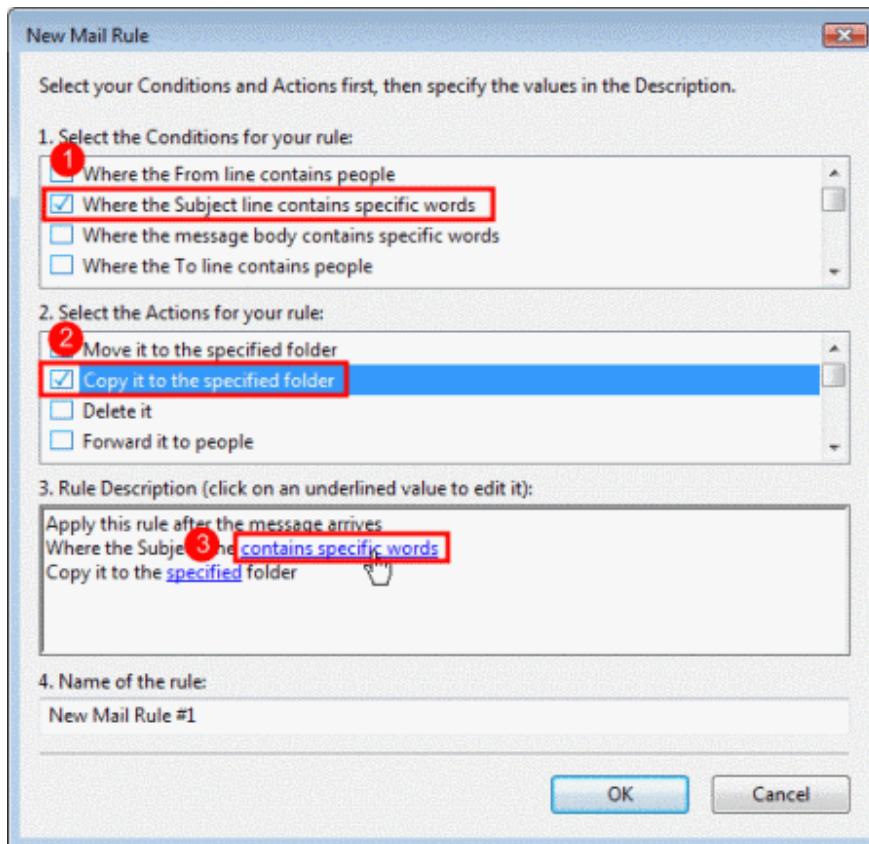


How To Setup Spam Filters for WINDOWS MAIL

First select the **Messages Rules/Mail** option under the **Tools** menu:

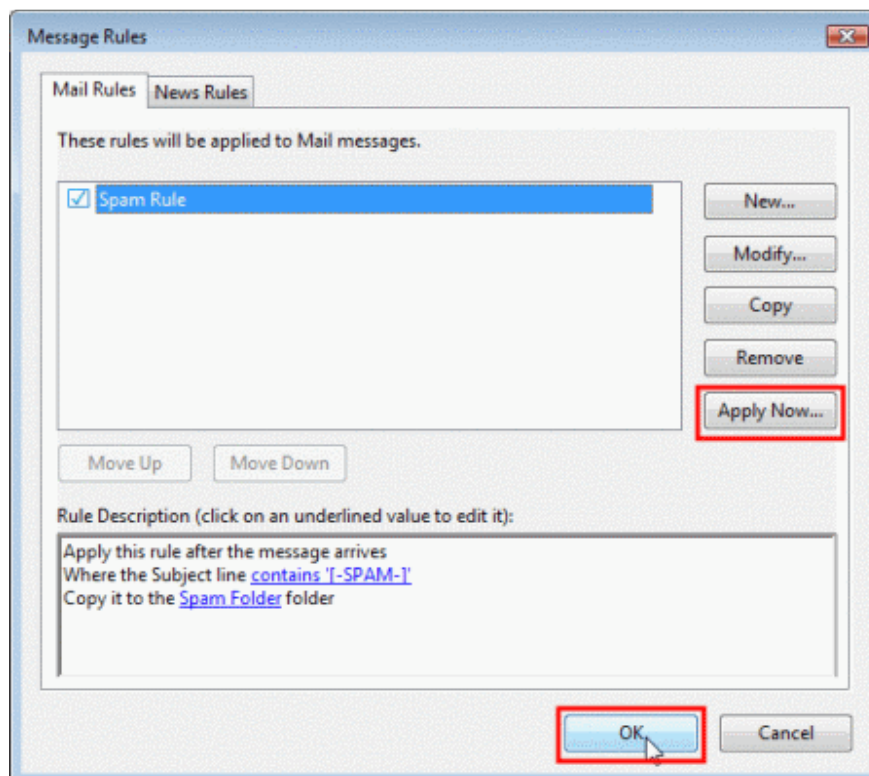
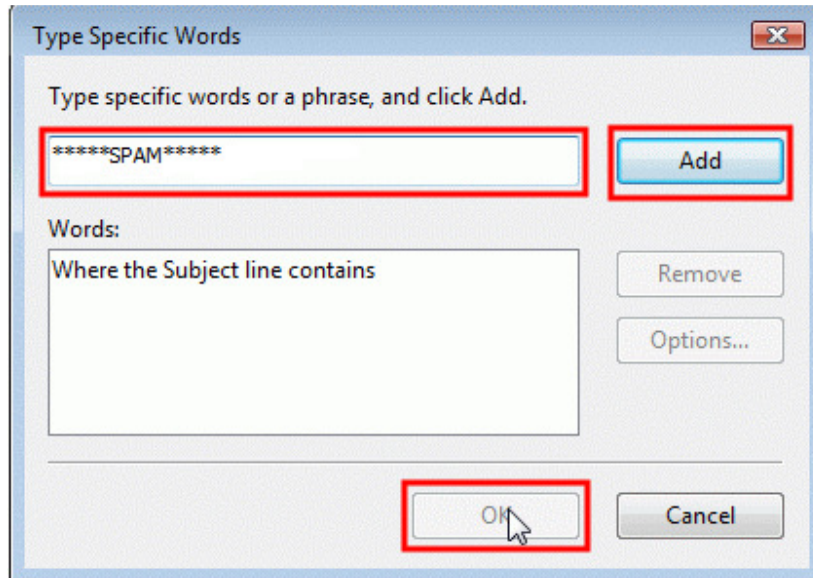


See details below the image for information on which options to select:



1. Select **Where the Subject line contains specific words**
2. Select **Permanently delete it**.
3. Click **contains specific words**

Enter the text [*****SPAM*****] and then click the Add button, then the OK button:



The rule has now been created. Click **OK**